

SHURE[®]

LEGENDARY
PERFORMANCE™



 DCS 6000 Digital Conference System

**SEAMLESS INTEGRATION,
WORLD-CLASS PERFORMANCE.**

For meetings that are more than just talk.

A conference is about more than just exchanging ideas. It is a gathering with a purpose – to debate, decide, and document new strategies or policies. Successful conferences demand more than just a sound system; they require a comprehensive meeting management tool that supports efficient decision making.

The DCS 6000 Digital Conference System is designed to seamlessly manage every aspect of a conference. It gives you complete control over audio, the agenda, support documents, voting, display, and web streaming, making meetings more productive.

- Superior audio quality, even in large or acoustically difficult rooms
- Attractive desktop and flush-mount units to fit any room design
- Modular software – add features as you need them
- Connectivity to videoconferencing and room control systems
- Audio encryption for security

Versatile, Scalable, Cost-Effective

The DCS 6000 is versatile enough to meet the architectural demands of a historic city hall or the unpredictable needs of one-time rental events. It can operate as a stand-alone system or connect to external audio or videoconferencing equipment. Modular design lets the system scale up to handle 3,800 delegates and 31 languages. And upgradeable software and firmware make the DCS 6000 a cost-effective investment.



The right conference system for your organization.

The DCS 6000 Digital Conference System is designed for any group that holds formal meetings – not just parliaments and international organizations. It's the ideal solution for:

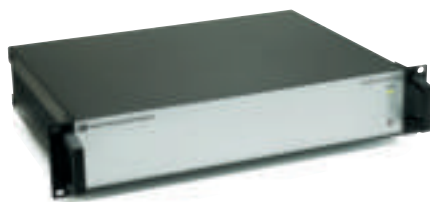
- Corporate boards of directors
- College, university, and hospital boards of trustees
- City, state, and regional councils and legislatures
- Professional associations, government agencies, and non-government organizations
- Summit meetings and annual conferences

CENTRAL EQUIPMENT



DIS-CCU CENTRAL UNIT

Central unit with control for up to 3,800 conference units and 150 interpreter sets. Supports 8 outputs and 31 interpreted channels



EX 6010 EXTENSION UNIT

An extension power supply for increasing either the DDS 5900 or the DCS 6000 systems' capacity. The power supply splits one DCS-LAN chain into 4 chains while adding regeneration of the signal and 125 watts of power to each of the four chains.



AO 6008 AUDIO OUTPUT UNIT

Outputs eight floor or language channels to IR language distribution systems, recording and web-streaming devices. Most settings are accessible via an easily navigable menu on the front of the AO. The audio properties can also be controlled by a PC with SW 6000 software.



JB 6104

Junction Box for connecting four conference or interpreter units at any point in the DCS-LAN chain



RP 6004

Repeater unit splits one DCS-LAN chain into four chains



PI 6000

Power Inserter for providing additional power to the DCS-LAN



AO 6004

4 channel analog Audio Output unit

PORTABLE CONFERENCE UNITS



DC 6990 P CONFERENCE UNIT

Universal conference unit with built-in loudspeaker, lockable XLR socket, chip card reader, voting functionality, channel selector, 2 headphone jacks and 3.5" touch screen.



DM 6680 P CONFERENCE UNIT

Delegate conference unit with built-in loudspeaker, lockable XLR socket, chip card reader, voting functionality, channel selector and headphone jack.



DC 6190 P CONFERENCE UNIT

Portable conference unit which can be configured both as chairman and delegate unit. Features speak/function buttons, XLR gooseneck microphone connector, loudspeaker, two channel selectors and two headphone connectors.

MICROPHONES



GM 652X

Gooseneck microphone for discussion and conference units with XLR socket.

GM 6523 40 cm length

GM 6524 50 cm length

GM 6525 63 cm length



GM 6628

Shotgun microphone for discussion and conference units with XLR socket.



HM 4042

Handheld microphone to use in combination with microphone unit MU 6040.



BM 6022

Boundary microphone for flush-mount units.

DCS 6000 Digital Conference System Components

FLUSH-MOUNTED CONFERENCE UNITS



CM 6680 F / DM 6680 F CONFERENCE UNIT

Features speak/function buttons, XLR gooseneck microphone connector, loudspeaker, 5 voting buttons, chip card reader and one channel selector.

CM 6680 F Chairman version
DM 6680 F Delegate version



DM 6620 F CONFERENCE UNIT

Features a speak/request button, XLR gooseneck microphone connector, loudspeaker, 5 voting buttons and chip card reader.



CM/DM 6080 F CONFERENCE UNIT

Features speak/function buttons, XLR gooseneck microphone connector, loudspeaker and channel selector.

CM 6080 F Chairman version
DM 6080 F Delegate version

MODULAR COMPONENTS

Allow alternative mounting locations when table dimensions or construction make mounting integrated flush-mounted conference units difficult.



MU 6040 D / MU 6040 C MICROPHONE UNIT

Microphone unit to connect FC/FD 6xxx conference units.

MU 6040 C Chairman version
MU 6040 D Delegate
MU 6042 D Dual Delegate

AM 6040 AMBIENT MICROPHONE UNIT

Ambient microphone unit for detecting ambient noise in a conference room. To use in combination with the microphone unit MU 6040.



CS 6340 FH / CS 6340 FV CHANNEL SELECTOR

Compact flush-mounted channel selectors that distribute the floor and interpretation channels to seating positions.

The delegate or audience member can listen via headphones with 3.5 mm jack (sold separately), set the volume and select the channel on the 3 digit OLED display.

CS 6340 FH Horizontal
CS 6340 FV Vertical



FC 6021 / FD 6121 CONFERENCE UNIT

Flush-mount unit with lockable XLR socket, speak and delegates off button (Chairman version only)

FC 6021 Chairman version
FD 6121 Delegate version



DV 6501 F CONFERENCE UNIT

Flush-mounted delegate conference unit. Features 3 voting buttons and chip card reader.



CUSTOMIZATION

Need something special? We can create a conference unit with your desired combination of features, in a special color, size, or shape, or with your company logo. We can also customize the SW 6000 software to provide the specific functionality that your installation requires. Contact your Shure system integrator for information about project costs and lead times.

INTERPRETATION EQUIPMENT



IS 6132 INTERPRETER UNIT

Portable interpreter unit. Features four relay languages, two outgoing channels, support for 32 channels (31 interpretation channels + 1 floor) and multiple interlock modes.



LS 6132 LOUDSPEAKER

Allows interpreters or press delegates to hear the floor sound through a separate loudspeaker. Connects to the DCS-LAN Network. The volume level is adjustable.



IH6500 INTERPRETER HEADSET

Dual-sided headset with reversible boom microphone and removable earpads. Included adapter cables permit use with different interpreter units.



DR 6004 / DR 6008 / DR 6032 DIGITAL INFRARED RECEIVER

For use in wireless simultaneous interpretation systems in conference centers, conference theaters, hotels etc. Up to 32 channels can be received with superb audio quality.

The ergonomically designed receivers use the latest electronics technology for maximum performance and a long battery life.



RA 6013 / RA 6025 DIGITAL RADIATOR

Radiates the IR signal to DR 60xx digital receivers in the same room. Available with 13 or 25 watts of output power.



DT 6008 / DT 6032 DIGITAL INFRARED TRANSMITTER

Transmits interpreter audio to the digital radiator for wireless language distribution to IR receivers. Accepts audio from DIS-CCU or AO 6004/6008. Available with 8 or 32 channels.

HEADPHONES



DH 6021 HEADPHONE

Stereo headphones for delegate and chairman unit.



DH 6223 STETHOSCOPE HEADPHONE

Stethoscope headphones for delegate or chairman unit (stereo).



DH 6225 EARCLIP HEADPHONE

Earclip for delegate or chairman unit.

FEATURE LICENSES

Feature Licenses add functionality to a DIS-CCU and allow the use of 6000-series conference units in larger meetings requiring more units or more languages.

FL6000

Allows DIS-CCU to operate with 6000-series conference units; adds VOX & Basic Voting.

FL6000-3800

Allows DIS-CCU to operate with 6000-series conference units; adds VOX & Basic Voting.

FL6000-INT-8, -16, -31

Expands interpretation capability to 8, 16 or 31 languages.





SW 6000 SOFTWARE

Adding SW 6000 software expands the functionality of the DCS 6000 system. The basic package is used to prepare and configure a conference off-line, and enables the installation of additional software modules and feature licenses. Additional modules enable functions such as microphone control, agenda management, chip card registration, etc. SW 6000 works with Microsoft Windows and can be installed on a stand-alone PC or on a network.

The **SW 6000 Basic Package** consists of the following components:

- SW 6005 CAA Application (one license)
- SW 6000 CUI Interface
- SQL 2008 Express Database Server
- SW 6000 Backup Utility



APPLICATIONS AND MODULES

Software modules add functionality to the DCS 6000 system. Note that some modules may require other modules to be installed for proper operation.

SW 6005 CONFERENCE ADMINISTRATION APPLICATION (CAA)

The CAA is used prior to the conference to enter agendas, delegate information, seat assignments, voting parameters, etc. on a PC.

SW 6008 CONFERENCE USER APPLICATION (CUA)

Allows the chairman or delegate to use certain functions (e.g. microphone control, voting, etc.) on a PC instead of a conference unit, depending on installed software modules.

SW 6010 SW MODULE MICROPHONE CONTROL

Allows the administrator to manually activate delegate microphones from a PC running CUA.

SW 6012 SW MODULE AGENDA HANDLING

Allows the administrator to enter an agenda with up to 6 levels.

SW 6015 SW MODULE MESSAGING

Allows messaging between PC's running CUA used by chairman, delegates, technicians, and interpreters.

SW 6018 SW MODULE MIMIC / SYNOPTIC

Allows a graphic of the room layout to be imported and stored.

SW 6020 SW MODULE DELEGATE NAMING

Allows administrator to create a delegate information table, so that delegates can be identified in the system by name instead of seat numbers.

SW 6032 SW MODULE INTERPRETATION CONTROL

Allows technician or interpretation manager to configure interpretation and monitor interpreter booths from a PC.

SW 6050 SW MODULE MULTI-LANGUAGE SCREEN

Enables delegates to view conference information in an alternative language when using CUA on an individual PC.

SW 6060 SW MODULE VOTING CONTROL

Enables chairman to start/stop voting (with 3 or 5 buttons), check attendance, verify a quorum, etc. using CUA on a PC.

SW 6062 SW MODULE VOTING FOR CUA

Allows delegate to cast votes from CUA on an individual PC (SW 6062 and CUA license required for each delegate's PC).

SW 6070 CHIP CARD REGISTRATION

Allows delegates to login by inserting an ID card into the conference unit.

SUGGESTED SOFTWARE BUNDLES

While the needs of each user can vary widely, certain core conference management functions are often required. These include the ability to identify which delegates are speaking, manage the conference agenda, and allow votes to be cast and recorded. The individual software modules required to deliver these popular functions are listed below.

MICROPHONE CONTROL WITH DELEGATE NAME

This bundle allows an administrator to create delegate name tables and seat assignments. When someone requests to speak, the chairman sees the name of the delegate in the request queue instead of just the seat number.

Includes:

SW **6000** Basic Package
 SW **6008** CUA
 SW **6010** Microphone Control
 SW **6018** Mimic / Synoptic Control
 SW **6020** Delegate Name

AGENDA CONTROL & DISPLAY

In addition to microphone control with delegate name, this bundle enables an administrator to enter and manage agenda items and display them on the touchscreens of conference units or, optionally, on large external displays. The Chairman can select which agenda item to discuss, and the meeting log will track the time spent discussing each item.

Includes:

SW **6000** Basic Package
 SW **6008** CUA
 SW **6010** Microphone Control
 SW **6018** Mimic / Synoptic Control
 SW **6020** Delegate Name
 SW **6012** Agenda Handling
 SW **6090** CDA

VOTING & ATTENDANCE

In addition to microphone and agenda control, voting functionality enables delegates to cast votes on issues selected by the Chairman, and records those votes in the meeting log. Voting results can be displayed on external screens. With optional software, delegate attendance can be verified by chip cards inserted in their conference units.

Includes:

SW **6000** Basic Package
 SW **6008** CUA
 SW **6010** Microphone Control
 SW **6018** Mimic / Synoptic Control
 SW **6020** Delegate Name
 SW **6012** Agenda Handling
 SW **6090** CDA
 SW **6060** Voting control
 FL **6000 4A / 4B / 4C / 4D / 4E**
 Voting Feature License

Optional:

SW **6070** Chip Card Registration
 SW **6071** Chip Card Programming

SW 6071

SW MODULE CHIP CARD PROGRAMMING

Allows administrator to program ID cards for conference participants using the CP 6001 programmer.

SW 6080

SW MODULE MULTIPLE ROOM CONTROL

Allows a technician to set up and supervise conferences in multiple rooms from one PC.

SW 6085

SW MODULE STREAMING CONTROL

Allows the chairman/administrator to start/stop a third-party streaming application from a PC running CUA.

SW 6086

SW MODULE WEB SERVICE INTERFACE

Allows the DCS 6000 to send real-time conference data (mic activation, progress through agenda items, voting results, etc.) to another software application.

SW 6090

CONFERENCE DISPLAY APPLICATION (CDA)

The CDA allows delegate information, agenda, voting results, etc. to be displayed on external video screens.

SW 6110

SW MODULE ADVANCED MIC CONTROL

Allows chairman or administrator to assign delegates to speak from both a primary and secondary seat or up to 3 podiums.

SW 6112

SW MODULE ADVANCED AGENDA CONTROL

Allows administrator to add short description and pre-assigned speaker to each agenda item, add comments to voting results, and include hyperlinks to stored documents for paperless meetings.

SW 6125

SW MODULE ADVANCED SPEECH TIME CONTROL

Allows administrator to assign different speech times to delegates according to name, type, or group.

SW 6186

SW MODULE ADVANCED IMPORT / EXPORT OF MEETINGS

Allows administrator to import/export meeting information to/from third-party document storage system.

SW 6232

EXTERNAL CONTROL APPLICATION (ECA)

Provides access to the RS-232 control interface of the Central Unit through a PC.

DCS 6000 Digital Conference System Specifications (Note: All specifications are subject to change.)

Electrical	DIS-CCU
Power consumption	Max. 150 W / 48 V
Supply voltage for units	125 W / 48 V
Audio quality	24 bit audio, 32 kHz
Frequency response	65 Hz – 16 kHz
THD	< 0.1 %
Signal-to-noise ratio	> 85 dBA

Audio inputs

Analog audio in 1	3-pin female XLR socket (electronically balanced)
Analog audio in 2 (Audio in or Emergency input - EEM)	3-pin female XLR socket (electronically balanced)

Audio outputs

Analog audio out (A, B, C and D)	8 × 3-pin male XLR sockets (electronically balanced)
Maximum load	> 1 kΩ

Interconnections

DCS-LAN	4 × RJ45 female sockets
EEM	One contact closure input

System Performance (feature license dependent)

Max. number of conference units (excl. CS)	3,800
Max. number of IS (Interpreter Units)	150
Max. number of IS units in one booth	32
Max. number of AO (Audio Output Units)	20
Max. number of CS (Channel Selector Units)	Unlimited
Max. number of languages	31
Max. number of open "floor" microphones	8

Mechanical

Mounting	Tabletop or mounted in a 19" one unit rack
Color	Black
Dimensions without feet (H x W x D)	44.4 × 426 × 186 mm
Weight	2,800 g
Storage temperature	-20 to 60 °C, 10-80% humidity
Optimal operating temperature	5 to 40 °C, 35-80% humidity

PS-CCU External Power Supply

Main voltage	100 – 240 V, 50 – 60 Hz
Max. consumption	175 W
Total supply power	150 W
Standby consumption	< 0.5 W
Supply voltage for DIS-CCU	48V/3A

Included Accessories

PS-CCU External Power Supply
Power Cable (EU connector), 1 piece
19" brackets, 1 set
Tool for fixing GM to XLR

Certifications

The DCS 6000 system conforms to standard IEC 60914. PS-CCU approvals CE, KC, CCC, cULus, TÜV Supply voltage for DIS-CCU 48V/3A.

Specifications of conference units can be found in the individual datasheets of each product. Please contact us.



**United States, Canada,
Latin America, Caribbean:**
Shure Incorporated
5800 West Touhy Avenue
Niles, IL 60714-4608 USA

Phone: +1 847-600-2000
Fax: +1 847-600-1212 (USA)
Fax: +1 847-600-6446
Email: info@shure.com
www.shure.com

Europe, Middle East, Africa:
Shure Europe GmbH
Jakob-Dieffenbacher-Str. 12,
75031 Eppingen, Germany

Phone: +49-7262-92490
Fax: +49-7262-9249114
Email: info@shure.de
www.shure.eu

Asia, Pacific:
Shure Asia Limited
22/F, 625 King's Road
North Point, Island East
Hong Kong

Phone: +852-2893-4290
Fax: +852-2893-4055
Email: info@shure.com.hk
www.shureasia.com