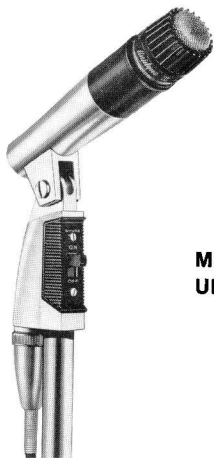




SHURE®

PROFESSIONAL ENTERTAINER MICROPHONES



**MODEL PE54
UNIDYNE® III**

Your selection of a Shure UNIDYNE® Microphone will contribute significantly to the professional quality of your performance. Shure UNIDYNE Microphones are unidirectional. This means that they pick up sound only from the front of the microphone. They suppress unwanted audience noise or other noises occurring at the rear of the microphone. You can work at significantly greater distances (up to 75% more) from the microphone than with non-directional microphones, without picking up objectionable background sound or the very annoying loud-speaker "squeal" (feedback). You don't have to lean over your instrument and get close to the microphone in order to be heard.

*(See inside for information on how to use your
Shure Microphone more effectively.)*

HOW TO CONTROL FEEDBACK

A performer's number one enemy in using a microphone is "feedback." This is a harsh hum, howl or squeal which occurs when the microphone picks up sound from the loudspeakers, re-amplifies and rebroadcasts it over and over again.

The key factor in the prevention of feedback is the position of the loudspeakers in relation to the microphone. Feedback occurs if the microphone picks up sound coming from the loudspeakers. Keep the loudspeakers as far to the sides as possible—so they do not point toward the microphone. Always keep the microphone pointed toward the performer and away from the loudspeakers. When stage monitor loudspeakers are used, make sure they are positioned in front of the performers and face the rear of the microphone.

If you are in a room with hard walls, floor, and ceiling, the sound from the loudspeakers may bounce back into the microphone and create feedback. Solve this problem by turning down the amplifier volume control and working closer to the microphone.

(Important Note: If you cannot solve the feedback problem with your UNIDYNE® III microphone, a Shure Feedback Controller is suggested.)

BASIC POINTS FOR PROFESSIONAL MICROPHONE TECHNIQUE

Proper microphone technique will add to the overall effectiveness with which you project yourself to your audience. Keep the following points in mind when using the microphone:

1. Maintain the proper distance from the microphone. When you wish to achieve an intimate tonal quality, get closer to the microphone and lower your voice. For wide-open "driving" effects, raise your voice and back away from the microphone so that you do not overdrive your amplifier to distortion.
2. Don't change your distance from the microphone needlessly, as this will affect the level of sound coming from the loudspeakers.
3. Consider the microphone as an instrument and practice your technique to enhance your performance.

YOUR SHURE MICROPHONE IS BUILT TO LAST!

Your Shure Microphone is ruggedly built and should give you years of uninterrupted service; however, remember that it is a sensitive instrument. Avoid dropping the microphone, or subjecting it to unnecessarily rough treatment. Normal usage, of course, will not impair performance of the unit. Use the protective carrying case to prevent damage not only when traveling, but also when storing the microphone.

MICROPHONE CHECK-LIST

1. Check microphone impedance—is it correct for the amplifier input being used?
2. Check microphone cable connectors to microphone, mixer and amplifier—are they tightly plugged in?
3. Check microphone, amplifier and/or mixer.
 - a. Are they turned on?
 - b. Are volume controls turned up?

IF THE MICROPHONE DOES NOT WORK

Check the above list. If the microphone then does not appear to be operating, check it on a spare cable. If the microphone still does not appear to be operating, have the microphone and cable checked by your Shure Professional Entertainer Products Dealer, or write Service Department, Shure Brothers Inc.

PHASING

To test two microphones and/or their cables for proper phasing, connect them to an amplifier and talk or sing into them while holding them three or four inches apart. The sound from the speakers should be the same when talking into either microphone or directly between them if they are in phase with each other. If the sound drops drastically, or if a dead spot is found when talking between the two microphones, they are out of phase. All cables and microphones should be tested in this manner to insure that they are in phase with each other.

To change the phase of a microphone, the microphone cartridge leads must be interchanged (see Figure 2). This should be performed by your dealer, the Shure Factory Service Department, or other qualified service personnel.

IMPEDANCE

Your Model PE54 is a high-impedance microphone. If cable lengths over 7.6 meters (25 feet) are required, or if the microphone is to be connected to a low-impedance input, it will be necessary to transform the microphone line to low impedance. Shure Model A95 Series Line Matching Transformers are available for use in those cases. These transformers provide a proper impedance match between a high-impedance microphone line and a low-impedance input, are fully reversible, and are supplied with various input and output connectors.



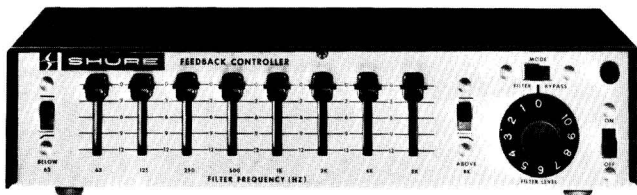
USING MORE THAN ONE MICROPHONE

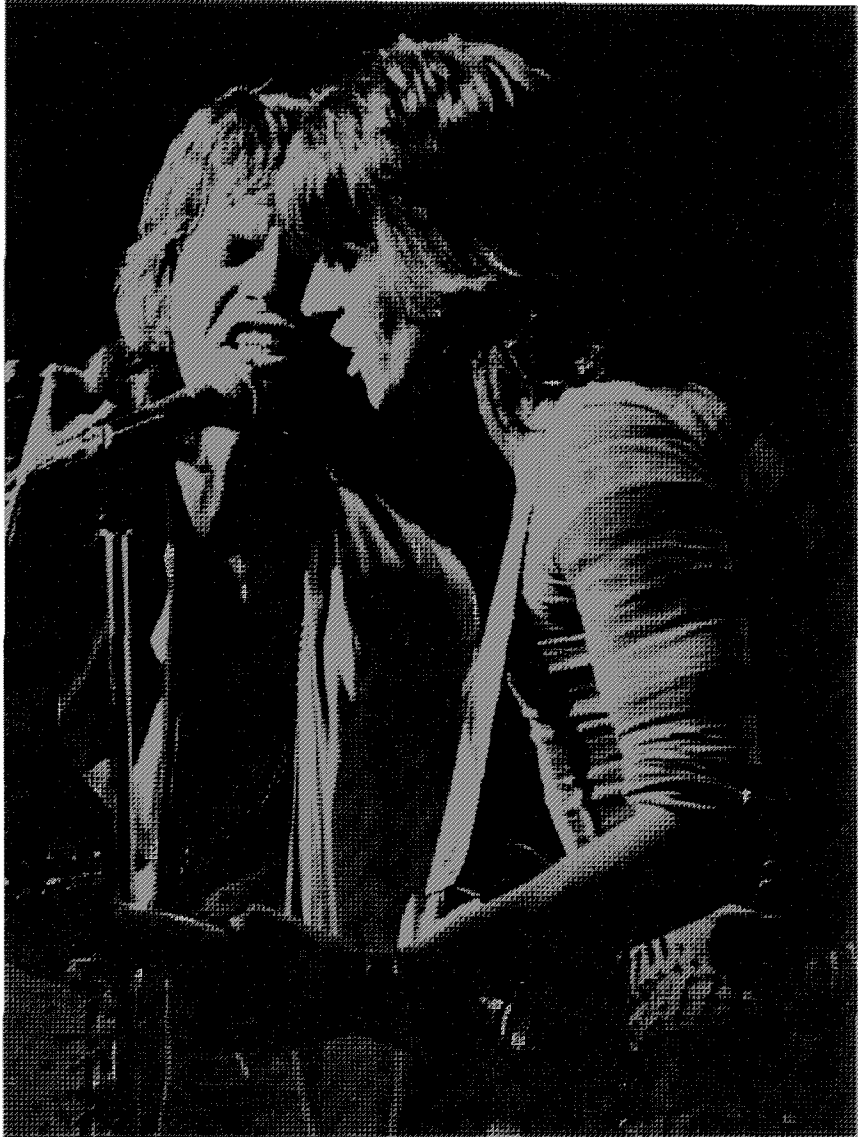
It is often desirable for a group to use a separate microphone for each individual performer. In this case, the following points should be remembered:

1. It is best if the microphones are individually controlled for volume through a separate Shure microphone mixer. *If this is not possible, it is desirable that each performer use the same type and model of microphone so that the group as a whole will be "balanced."*
2. Check the placement of the microphones with relation to loudspeakers (as previously mentioned) so that feedback is minimized.
3. As additional microphones are added the possibility of feedback increases. Turn off, or down, unused microphones to help solve this problem.

SHURE FEEDBACK CONTROLLER

Lets you "tune" your sound system to the acoustics of the room. The result is more overall sound power *without* feedback. Eight linear-motion filter controls are infinitely variable from 0 to 12 dB cut. Below 63 Hz and Above 8 kHz roll-off switches attenuate low and high frequencies. Can be installed between mixer or console and amplifier for total system control, or following each microphone as a single-channel preamplifier with feedback control.





**THE VITAL LINK
BETWEEN YOU AND
THE AUDIENCE**

SHURE PROFESSIONAL ENTERTAINER
MICROPHONES

MODEL PE54 SPECIFICATIONS

Type: Dynamic, Cardioid (Unidirectional)

Frequency Response: 50 to 15,000 Hz (see Figure 1)

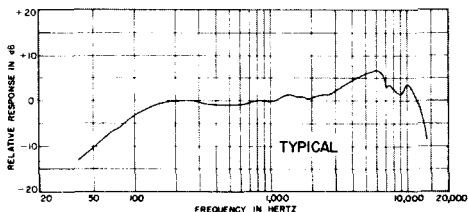


FIGURE 1

Impedance: Microphone impedance is "High" for connection to high-impedance microphone inputs

Output Level
(at 1,000 Hz): Open Circuit Voltage -54 dB (2.0 mV)
(0 dB = 1 volt per microbar)

Phasing: Positive pressure on diaphragm produces positive voltage on Pin 1 (see Figure 2 and Page 4).

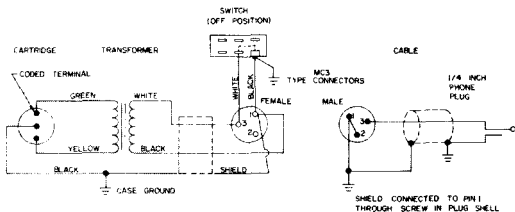


FIGURE 2

GUARANTEE

This Shure product is guaranteed in normal use to be free from electrical and mechanical defects for a period of one year from date of purchase. Please retain proof of purchase date. This guarantee includes all parts and labor. This guarantee is in lieu of any and all other guarantees or warranties, express or implied, and there shall be no recovery for any consequential or incidental damages.

SHIPPING INSTRUCTIONS

Carefully repack the unit and return it prepaid to:

Shure Brothers Incorporated
Attention: Service Department
1501 West Shure Drive
Arlington Heights, Illinois 60004

If outside the United States, return the unit to your dealer or Authorized Shure Service Center for repair. The unit will be returned to you prepaid.

MODEL PE54 SPECIFICATIONS (Continued)

| | |
|-------------------------|---|
| Switch: | Slide-to-talk, locking type On-Off switch, integral part of swivel assembly |
| Connector: | Equipped with Amphenol MC3F type female connector |
| Shock Mount: | Internal rubber vibration-isolator |
| Case: | Chrome-plated die casting and black ARMO-DUR® with stainless steel grille |
| Cable: | 6.1m (20 ft) single-conductor shielded cable with Amphenol MC3M type male connector on microphone end and ¼ in. phone plug on equipment end |
| Net Weight: | 425 grams (15 oz) less cable |
| Packaged Weight: | 1.16 kg (2 lb, 9 oz) |

FURNISHED ACCESSORY

Carrying Case: 90C1413

OPTIONAL ACCESSORIES

Desk Stand: S33B, S37A, S39A, or S40A

Disconnect Adapter: A47

Line Matching Transformer: A95 Series

Windscreen: A2WS

REPLACEMENT PARTS

Cartridge: R45

Switch: RK32S

Cable: C5-3

Cable Connector: RK116P

Plug Element: RK31P

AREA CODE 312 866-2200

CABLE SHUREMICRO



SHURE BROTHERS INC.
222 HARTREY AVENUE
EVANSTON, ILLINOIS 60204
U.S.A.

Copyright 1977
Shure Brothers Inc.
27A341 (QK)

Printed in U.S.A.
U.S. Patents 3,132,713
and 3,240,883