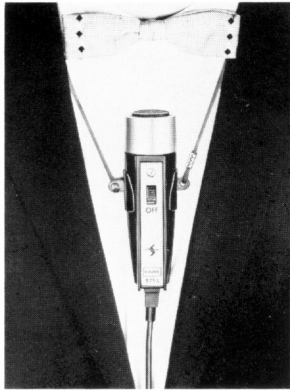


SHURE®

MODELS 575S AND 575SB OMNIDIRECTIONAL DYNAMIC MICROPHONES



MODEL 575S IN
STAND ADAPTER



MODEL 575S USED
AS A LAVALIER
MICROPHONE



MODEL 575S MOUNTED
IN WALL
HANGER

“VERSADYNE” OMNIDIRECTIONAL DYNAMIC MICROPHONES

GENERAL

Model 575S and Model 575SB are moving coil (dynamic) microphones with a wide frequency response range and omnidirectional pickup characteristics that make them excellent for both music and voice reproduction. The microphones are ruggedly built to withstand rough usage and wide variations in temperature and humidity. The small size and light weight of the 575 Series microphones make them suitable for a wide variety of applications: wall or panel mounted, on a desk or floor stand, for lavalier or handheld use.

The microphones are equipped with a built-in slide-to-talk On-Off switch and an attached 2.1m (7 ft) single-conductor shielded cable.

The microphones are provided with a stand adapter and with a lavalier assembly that can also be used as a wall-mount after the cord has been removed.

Microphone Features:

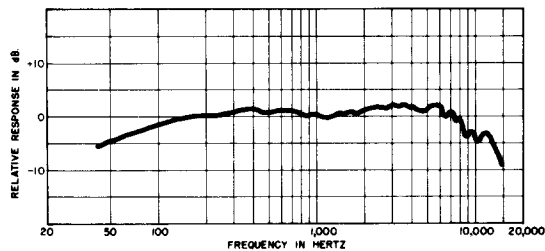
- Excellent, smooth reproduction of voice and music
- Omnidirectional pickup pattern
- Versatility—for use in the hand or on a stand, or lavalier or wall mounted
- Available in either high-impedance (575S) or low-impedance (575SB) versions
- Rugged construction, high quality, low cost

SPECIFICATIONS

Type
Dynamic

Frequency Response

40 to 15,000 Hz (See Figure 1)



TYPICAL FREQUENCY RESPONSE
FIGURE 1

Polar Pattern

Omnidirectional

Impedance

Model 575S—Microphone impedance is “High” for connection to high-impedance microphone inputs

Model 575SB—Microphone rating impedance is 150 ohms (200 ohms actual) for connection to microphone inputs rated at 19 to 300 ohms

Output Level (at 1,000 Hz)

	575S	575SB
Open Circuit Voltage*	−56.0 dB (1.57 mV)	−79.0 dB (.112 mV)
Power Level**		−58.0 dB

*0 dB = 1 volt per microbar

**0 dB = 1 milliwatt per 10 microbars

MODELS 575S AND 575SB
OMNIDIRECTIONAL DYNAMIC MICROPHONES

SHURE®

Switch

Built-in On-Off switch

Cable

2.1m (7 ft) single-conductor shielded, attached

Stand Adapter

Permits easy removal for handheld use, suitable for mounting on stand with 5/8"-27 thread

Lavalier Assembly

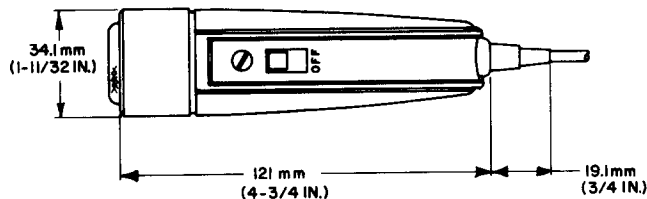
Holds microphone securely, allows instant removal, can be converted to wall-mount by removal of cord

Case

Black ARMO-DUR® with satin anodized cap and stainless steel grille

Dimensions

See Figure 2



OVERALL DIMENSIONS
FIGURE 2

Net Weight

142 grams (5 oz)

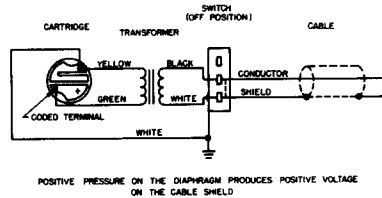
Packaged Weight

482 grams (1 lb, 1 oz)

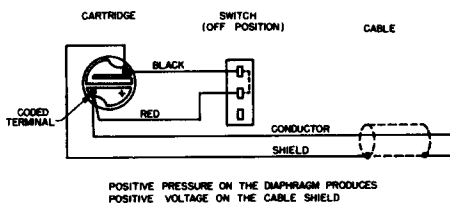
PHASING

To test two microphones for proper phasing, connect them to an amplifier and talk or sing into them while holding them three or four inches apart. The sound from the speakers should be the same when talking into either microphone or directly between them if they are in phase with each other. If the sound drops drastically, or if a dead spot is found when talking between the two microphones, the microphones are out of phase. All microphones should be tested in this manner to insure that they are in phase with each other.

To change the phase of a microphone, the microphone cartridge leads must be interchanged (see Figures 3 and 4). This should be performed by your dealer, the Shure Factory Service Department, or other qualified service personnel.



MODEL 575S INTERNAL CONNECTIONS
FIGURE 3



MODEL 575SB INTERNAL CONNECTIONS
FIGURE 4

FURNISHED ACCESSORY

Stand Adapter	65A280A
Lavalier Assembly	94A278

OPTIONAL ACCESSORIES

Desk Stand	S33B, S37A, S39A
------------------	------------------

REPLACEMENT PARTS

	575S	575SB
Cartridge	R50	R50
Cable and Case Assembly	94C395	94D395
Transformer	51A38	
On-Off Switch	94B344	94C344

ARCHITECTS' SPECIFICATIONS

The microphone shall be the Shure Model 575S, 575SB, or equivalent. The microphone shall be a moving coil (dynamic) type with a frequency response of 40 to 15,000 Hz. The unit shall have an omnidirectional polar characteristic.

Model 575S shall be high impedance for connection to high-impedance microphone inputs.

Model 575SB shall be low impedance with a rated impedance of 150 ohms for connection to microphone inputs rated at 19 to 300 ohms.

The microphone output shall be:

575S -56.0 dB
(0 dB = 1 volt per microbar)

575SB -58.0 dB
(0 dB = 1 milliwatt per 10 microbars)

The microphone shall be equipped with a built-in On-Off switch and a nondetachable 2.1m (7 ft) single-conductor shielded cable.

The microphone shall be provided with a stand adapter suitable for mounting on a stand with a 5/8"-27 thread. The microphone shall also be provided with a lavalier assembly.

The overall dimensions of the microphone shall be 121 mm (4-3/4 in.) in length and 34.1 mm (1-11/32 in.) in diameter.

GUARANTEE

This Shure product is guaranteed in normal use to be free from electrical and mechanical defects for a period of one year from date of purchase. Please retain proof of purchase date. This guarantee includes all parts and labor. This guarantee is in lieu of any and all other guarantees or warranties, express or implied, and there shall be no recovery for any consequential or incidental damages.

SHIPPING INSTRUCTIONS

Carefully repack the unit, have it insured, and return it prepaid to:

Shure Brothers Incorporated
Attention: Service Department
222 Hartrey Avenue
Evanston, Illinois 60204

If outside the United States, return the unit to your dealer or Authorized Shure Service Center for repair. The unit will be returned to you prepaid.