

SHURE**MICROPHONES AND ELECTRONIC COMPONENTS**AREA CODE 312/866-2200 • CABLE: SHUREMICRO
TWX: 910-231-0048 TELEX: 72-4381

THE PREMIER FAMILY OF STEREO SOUND REPRODUCERS

MODEL M3D STEREO DYNETIC®
PHONOGRAPH CARTRIDGE

GENERAL

The Model M3D Cartridge has been developed for use with all high fidelity amplifiers having magnetic and constant velocity inputs.

SPECIFICATIONS

FREQUENCY RESPONSE: 20 to 15,000 Hz

OUTPUT (1,000 Hz at 5 cm/sec peak recorded velocity): 7.5 mV per channel

CHANNEL SEPARATION (minimum): 20 dB at 1,000 Hz

STYLUS: Model N3D, Spherical, Radius 18 microns (.0007 in.)

TRACKING FORCE: 3 to 6 grams (Tracking forces greater than maximum indicated should not be used.)

OPTIMUM LOAD: 47,000 ohms

INDUCTANCE: 420 millihenries

DC RESISTANCE: 280 ohms

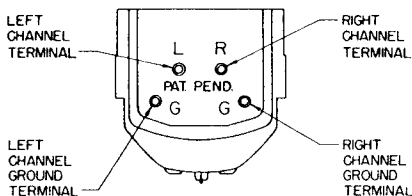
STATIC COMPLIANCE: VERTICAL } 4×10^{-6} cm per dyne
HORIZONTAL }

NET WEIGHT: 9.2 grams

MONOPHONIC OPERATION: Set function switch on amplifier to "MONO" or "A+B." If amplifier is not equipped with this switch, connect left and right channels in parallel.

CONNECTIONS (see Figure 1): Right "hot" lead (usually red) to "R," right ground (usually green) to "G" below "R." Left "hot" lead (usually white) to "L," left ground (usually blue) to "G" below "L."

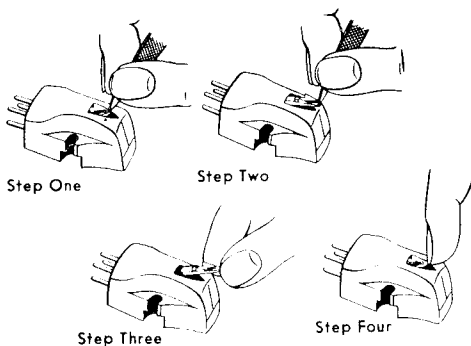
CAUTION: Do not make solder connections to cartridge terminals.

**TERMINAL DIAGRAM****FIGURE 1****STYLUS REPLACEMENT** (see Figure 2):

The stylus assembly, when installed in the cartridge is practically immune to damage during normal usage. However, care should be taken to avoid bending or distorting the stylus assembly when it is installed or removed.

Stylus replacement is simple and fast. (See Figure 2). To replace (Step 1) — Insert fingernail file (or similarly pointed tool) behind the lip at the front of the stylus spade. Care must be taken not to deform stylus shank (portion holding stylus tip) or spring wire in the stylus assembly. (Step 2) — Withdraw stylus by pulling forward out of cartridge — lift completely out with thumb and forefinger. (Step 3) — grasp new stylus between thumb and forefinger and insert into stylus socket of cartridge. (Step 4) — Press stylus into socket until it is firmly seated. Apply pressure at the front portion of the spade. Care must be taken not to allow the finger to slip off of the front of the stylus spade resulting in damage to the stylus tip.

(OVER)



STYLUS REPLACEMENT

FIGURE 2

MOUNTING [12.7 mm (1/2 in.) mounting centers]: Mounting screws are provided.

1. Remove Stylus guard and stylus (see Stylus Replacement).
2. Connect leads to cartridge (see Figure 1).
3. Lay cartridge in shell and align mounting holes on side of cartridge with holes or threads in shell. Follow turntable manufacturer's instructions to mount cartridge in tone arm or plug-in shell.
4. Reinsert stylus (see Stylus Replacement).

RECOMMENDED STYLUS CLEANING: Use a camel's hair brush (No. 2 size or smaller), trimmed to approximately 6 mm (1/4 in.), dipped in alcohol or an alcohol-distilled water solution. Commercial cleaning solutions may cause stylus damage or corrosion. Always brush stylus from back to front; never brush or wipe stylus from front to back or side to side.

TO PRESERVE STYLUS LIFE:

1. Follow turntable or tone arm instructions when adjusting antiskating force.
2. Do not handle the tone arm while it is in operation since this may cause the arm to sweep across the record.
3. If it is necessary to manually place the tone arm in the record groove while turntable is rotating, release it as soon as the stylus engages the record groove.
4. Correct improper set-down adjustment or malfunction of the turntable changing mechanism to prevent the stylus from striking the edge of the turntable or record. Do not stack more records than turntable manufacturer recommends.
5. Take care to properly insert the stylus into the cartridge assembly and the cartridge and shell assembly into the tone arm receptacle.
6. Use proper vertical tracking force setting for each cartridge.
7. Do not use badly warped, cracked or imperfect records.
8. When dusting the turntable protect the stylus with the stylus guard.

SPECIAL NOTE: To maintain the original performance standards of your cartridge, be certain that any replacement stylus you buy bears the following certification on the package: "This Dynetic® stylus is precision manufactured by Shure Brothers Inc." AVOID INFERIOR IMITATIONS. THEY WILL SERIOUSLY DEGRADE THE PERFORMANCE OF YOUR CARTRIDGE. ALL GENUINE "DYNETIC®" STYLI ARE MANUFACTURED BY SHURE BROTHERS INC. For more information on your Shure stylus, write for booklet: "A Visit to the Small World of a Stylus."

FULL ONE-YEAR WARRANTY: Shure Brothers Incorporated ("Shure"), 222 Hartrey Avenue, Evanston, Illinois 60204, warrants to the owner of this product that it will be free, in normal use, of any defects in workmanship and materials for a period of one year from date of purchase. You should retain proof of date of purchase. Shure is not liable for any consequential damages. If this Shure product has any defects as described above, carefully repack the unit and return it prepaid to:

Shure Brothers Incorporated
Attention: Service Department
1501 West Shure Drive
Arlington Heights, Illinois 60004

If you are not in the United States, return the unit to your dealer or Authorized Service Center for repair. The unit will be repaired or replaced and returned to you promptly, and if it cannot be repaired or replaced, you may elect to receive a refund. This warranty does not include stylus wear.

PATENT NOTICE: Cartridge and stylus manufactured under one or more of the following U.S. patents: 3,055,988, 3,077,521, 3,077,522, and 3,463,889.